

Not / Note

HDPE

EF EK PARÇALAR EF FITTINGS

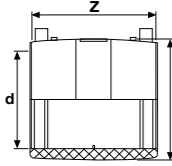
ÜRETİM STANDARDI

PRODUCTION STANDARD

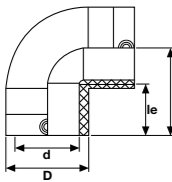
TS EN 12201-3 +A1

ÇAP / SIZE Ø20 - Ø400

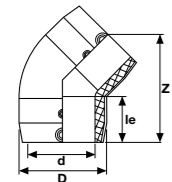


EF Manşon
 EF Double Socket

PE 100 SDR11

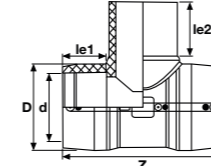
| Çap Dia | Basınç PN | Kod Code | Kg/Adet Kg/Pcs | Koli/Adet Box/Pcs | D (mm) | Z (mm) |
|---------|-----------|---------------|----------------|-------------------|--------|--------|
| 20 | 16 | 902 004 020 2 | 0,033 | 80 | 29 | 77 |
| 25 | 16 | 902 004 025 2 | 0,037 | 80 | 34 | 77 |
| 32 | 16 | 902 004 032 2 | 0,057 | 75 | 43 | 77 |
| 40 | 16 | 902 004 040 2 | 0,080 | 90 | 52 | 90 |
| 50 | 16 | 902 004 050 2 | 0,096 | 70 | 62 | 91 |
| 63 | 16 | 902 004 063 2 | 0,164 | 18 | 80 | 98 |
| 75 | 16 | 902 004 075 2 | 0,221 | 16 | 94 | 110 |
| 90 | 16 | 902 004 090 2 | 0,378 | 12 | 111 | 124 |
| 110 | 16 | 902 004 110 2 | 0,652 | 15 | 136 | 144 |
| 125 | 16 | 902 004 125 2 | 0,769 | 16 | 151 | 154 |
| 140 | 16 | 902 004 140 2 | 0,944 | 12 | 169 | 162 |
| 160 | 16 | 902 004 160 2 | 1,327 | 10 | 193 | 172 |
| 180 | 16 | 902 004 180 2 | 1,907 | 8 | 217 | 184 |
| 200 | 16 | 902 004 200 2 | 2,445 | 4 | 241 | 198 |
| 225 | 16 | 902 004 225 2 | 3,269 | 4 | 271 | 212 |
| 250 | 16 | 902 004 250 2 | 4,391 | 2 | 304 | 228 |
| 280 | 16 | 902 004 280 2 | 6,080 | 1 | 340 | 244 |
| 315 | 16 | 902 004 315 2 | 7,940 | 1 | 380 | 264 |
| 355 | 16 | 902 004 355 2 | 10,330 | 1 | 433 | 280 |
| 400 | 16 | 902 004 400 2 | 14,320 | 1 | 488 | 300 |

EF 90° Dirsek
 EF 90° Elbow

PE 100 SDR11

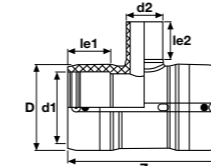
| Çap Dia | Basınç PN | Kod Code | Kg/Adet Kg/Pcs | Koli/Adet Box/Pcs | D (mm) | Z (mm) | le (mm) |
|---------|-----------|---------------|----------------|-------------------|--------|--------|---------|
| 20 | 16 | 902 006 020 2 | 0,150 | 40 | 43 | 63 | 40 |
| 25 | 16 | 902 006 025 2 | 0,060 | 100 | 35 | 60 | 41 |
| 32 | 16 | 902 006 032 2 | 0,100 | 80 | 44 | 62 | 40 |
| 40 | 16 | 902 006 040 2 | 0,120 | 55 | 52 | 65 | 42 |
| 50 | 16 | 902 006 050 2 | 0,170 | 50 | 63 | 72 | 45 |
| 63 | 16 | 902 006 063 2 | 0,310 | 25 | 81 | 84 | 50 |
| 75 | 16 | 902 006 075 2 | 0,440 | 16 | 95 | 92 | 53 |
| 90 | 16 | 902 006 090 2 | 0,680 | 15 | 113 | 109 | 60 |
| 110 | 16 | 902 006 110 2 | 1,150 | 6 | 137 | 135 | 73 |
| 125 | 16 | 902 006 125 2 | 1,640 | 6 | 154 | 152 | 78 |
| 160 | 16 | 902 006 160 2 | 5,000 | 2 | 201 | 205 | 87 |
| 180 | 16 | 902 006 180 2 | 4,120 | 2 | 222 | 197 | 90 |

EF 45° Dirsek
 EF 45° Elbow

PE 100 SDR11

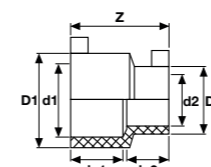
| Çap Dia | Basınç PN | Kod Code | Kg /Adet Kg/Pcs | Koli/Adet Box/Pcs | D (mm) | Z (mm) | le (mm) |
|---------|-----------|---------------|-----------------|-------------------|--------|--------|---------|
| 32 | 16 | 902 005 032 2 | 0,080 | 100 | 44 | 99 | 40 |
| 40 | 16 | 902 005 040 2 | 0,100 | 70 | 53 | 108 | 42 |
| 50 | 16 | 902 005 050 2 | 0,130 | 50 | 63 | 124 | 45 |
| 63 | 16 | 902 005 063 2 | 0,230 | 30 | 79 | 137 | 50 |
| 75 | 16 | 902 005 075 2 | 0,350 | 20 | 94 | 153 | 53 |
| 90 | 16 | 902 005 090 2 | 0,550 | 18 | 117 | 177 | 60 |
| 110 | 16 | 902 005 110 2 | 0,930 | 10 | 137 | 213 | 75 |
| 125 | 16 | 902 005 125 2 | 1,250 | 6 | 154 | 240 | 79 |
| 160 | 16 | 902 005 160 2 | 4,500 | 2 | 201 | 283 | 89 |
| 180 | 16 | 902 005 180 2 | 3,130 | 2 | 222 | 299 | 90 |

EF Eşit Te
 EF Equal Tee

PE 100 SDR11

| Çap Dia | Basınç PN | Kod Code | Kg/Adet Kg/Pcs | Koli/Adet Box/Pcs | D (mm) | Z (mm) | le1 (mm) | le2 (mm) |
|---------|-----------|---------------|----------------|-------------------|--------|--------|----------|----------|
| 20 | 16 | 902 007 020 2 | 0,140 | 50 | 44 | 98 | 35 | 65 |
| 25 | 16 | 902 007 025 2 | 0,130 | 50 | 44 | 98 | 35 | 65 |
| 32 | 16 | 902 007 032 2 | 0,110 | 50 | 44 | 98 | 35 | 65 |
| 40 | 16 | 902 007 040 2 | 0,160 | 18 | 52 | 131 | 44 | 59 |
| 50 | 16 | 902 007 050 2 | 0,190 | 25 | 64 | 138 | 43 | 55 |
| 63 | 16 | 902 007 063 2 | 0,360 | 20 | 82 | 164 | 49 | 63 |
| 75 | 16 | 902 007 075 2 | 0,550 | 14 | 95 | 189 | 55 | 70 |
| 90 | 16 | 902 007 090 2 | 0,820 | 16 | 112 | 210 | 65 | 79 |
| 110 | 16 | 902 007 110 2 | 1,450 | 6 | 139 | 260 | 72 | 82 |
| 125 | 16 | 902 007 125 2 | 2,240 | 4 | 160 | 268 | 77 | 87 |
| 160 | 16 | 902 007 160 2 | 3,340 | 2 | 195 | 320 | 86 | 98 |
| 180 | 16 | 902 007 180 2 | 5,300 | 2 | 230 | 340 | 88 | 105 |

EF İnegal Te
 EF Reducer Tee

PE 100 SDR11

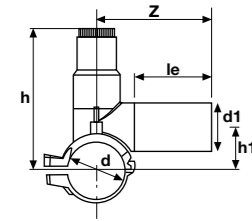
| Çap Dia | Basınç PN | Kod Code | Kg/Adet Kg/Pcs | Koli/Adet Box/Pcs | D (mm) | Z (mm) | le1 (mm) | le2 (mm) |
|---------|-----------|-----------------|----------------|-------------------|--------|--------|----------|----------|
| 50-40 | 16 | 902 08 5040 2 | 0,300 | 25 | 64 | 138 | 43 | 49 |
| 63-50 | 16 | 902 08 6350 2 | 0,330 | 18 | 82 | 164 | 49 | 55 |
| 63-40 | 16 | 902 08 6340 2 | 0,310 | 24 | 82 | 164 | 49 | 49 |
| 63-32 | 16 | 902 08 6332 2 | 0,300 | 24 | 82 | 164 | 49 | 44 |
| 75-63 | 16 | 902 08 7563 2 | 0,520 | 14 | 95 | 189 | 55 | 63 |
| 90-63 | 16 | 902 08 9063 2 | 0,740 | 8 | 112 | 210 | 65 | 63 |
| 110-90 | 16 | 902 08 11090 2 | 1,330 | 6 | 139 | 260 | 72 | 79 |
| 110-63 | 16 | 902 08 11063 2 | 1,220 | 8 | 139 | 260 | 72 | 63 |
| 125-110 | 16 | 902 08 125110 2 | 1,630 | 4 | 160 | 268 | 77 | 82 |
| 125-90 | 16 | 902 08 12590 2 | 1,550 | 4 | 160 | 268 | 77 | 79 |
| 125-63 | 16 | 902 08 12563 2 | 1,440 | 4 | 160 | 268 | 77 | 63 |
| 160-110 | 16 | 902 08 160110 2 | 2,890 | 2 | 195 | 320 | 86 | 82 |
| 160-90 | 16 | 902 08 16090 2 | 2,790 | 2 | 195 | 320 | 86 | 79 |
| 160-63 | 16 | 902 08 16063 2 | 2,700 | 2 | 195 | 320 | 86 | 63 |
| 180-125 | 16 | 902 08 180125 2 | 3,830 | 2 | 230 | 340 | 88 | 87 |

EF Redüksiyon
 EF Reducer

PE 100 SDR11

| Çap Dia | Basınç PN | Kod Code | Kg /Adet Kg/Pcs | Koli/Adet Box/Pcs | D1 (mm) | D2 (mm) | le1 (mm) | le2 (mm) | Z (mm) |
|---------|-----------|-----------------|-----------------|-------------------|---------|---------|----------|----------|--------|
| 25-20 | 16 | 902 09 2520 2 | 0,03 | 75 | 34 | 29 | 38 | 36 | 77 |
| 32-25 | 16 | 902 09 3225 2 | 0,05 | 75 | 43 | 34 | 39 | 37 | 77 |
| 32-20 | 16 | 902 09 3220 2 | 0,04 | 75 | 43 | 29 | 40 | 36 | 77 |
| 40-32 | 16 | 902 09 4032 2 | 0,10 | 100 | 52 | 43 | 46 | 43 | 84 |
| 50-40 | 16 | 902 09 5040 2 | 0,09 | 80 | 62 | 52 | 46 | 42 | 91 |
| 50-32 | 16 | 902 09 5032 2 | 0,08 | 80 | 62 | 44 | 46 | 40 | 91 |
| 63-50 | 16 | 902 09 6350 2 | 0,13 | 60 | 78 | 62 | 52 | 48 | 102 |
| 63-40 | 16 | 902 09 6340 2 | 0,10 | 60 | 77 | 52 | 52 | 45 | 102 |
| 63-32 | 16 | 902 09 6332 2 | 0,13 | 60 | 78 | 44 | 52 | 44 | 102 |
| 75-63 | 16 | 902 09 7563 2 | | | | | | | |
| 90-63 | 16 | 902 09 9063 2 | 0,30 | 35 | 110 | 79 | 62 | 55 | 123 |
| 110-90 | 16 | 902 09 11090 2 | 0,53 | 20 | 134 | 111 | 71 | 63 | 138 |
| 110-63 | 16 | 902 09 11063 2 | 0,54 | | 135 | 80 | 71 | 53 | 158 |
| 125-90 | 16 | 902 09 12590 2 | 0,70 | 12 | 152 | 112 | 75 | 62 | 145 |
| 160-110 | 16 | 902 09 160110 2 | | | | | | | |
| 160-90 | 16 | 902 09 16090 2 | | | | | | | |
| 180-125 | 16 | 902 09 180125 2 | 2,09 | 4 | 216 | 157 | 115 | 90 | 221 |

EF Vanalı Servis Te
EF Valve With Tee Servic

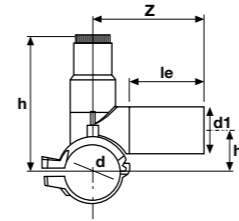
PE 100 SDR11



| Çap Dia | Basınç PN | Kod Code | Kg /Adet Kg/Pcs | Koli/Adet Box/Pcs | le (mm) | H (mm) | H1 (mm) | Z (mm) |
|---------|-----------|-----------------|-----------------|-------------------|---------|--------|---------|--------|
| 63-63 | 16 | 903 001 063 063 | 2,360 | 6 | 100 | 223 | 114 | 152 |
| 63-50 | 16 | 903 001 063 050 | 2,330 | 6 | 74 | 223 | 114 | 126 |
| 63-40 | 16 | 903 001 063 040 | 2,320 | 6 | 74 | 223 | 114 | 126 |
| 63-32 | 16 | 903 001 063 032 | 2,300 | 6 | 74 | 223 | 114 | 126 |
| 63-25 | 16 | 903 001 063 025 | 2,280 | 6 | 74 | 223 | 114 | 126 |
| 63-20 | 16 | 903 001 063 020 | 2,270 | 6 | 74 | 223 | 114 | 126 |
| 75-63 | 16 | 903 001 075 063 | 2,490 | 6 | 100 | 229 | 120 | 152 |
| 75-50 | 16 | 903 001 075 050 | 2,460 | 6 | 74 | 229 | 120 | 126 |
| 75-40 | 16 | 903 001 075 040 | 2,450 | 6 | 74 | 229 | 120 | 126 |
| 75-32 | 16 | 903 001 075 032 | 2,430 | 6 | 74 | 229 | 120 | 126 |
| 75-25 | 16 | 903 001 075 025 | 2,410 | 6 | 74 | 229 | 120 | 126 |
| 75-20 | 16 | 903 001 075 020 | 2,400 | 6 | 74 | 229 | 120 | 126 |
| 90-63 | 16 | 903 001 090 063 | 2,450 | 6 | 100 | 237 | 128 | 152 |
| 90-50 | 16 | 903 001 090 050 | 2,420 | 6 | 74 | 237 | 128 | 126 |
| 90-40 | 16 | 903 001 090 040 | 2,410 | 6 | 74 | 237 | 128 | 126 |
| 90-32 | 16 | 903 001 090 032 | 2,390 | 6 | 74 | 237 | 128 | 126 |
| 90-25 | 16 | 903 001 090 025 | 2,370 | 6 | 74 | 237 | 128 | 126 |
| 90-20 | 16 | 903 001 090 020 | 2,360 | 6 | 74 | 237 | 128 | 126 |
| 110-63 | 16 | 903 001 110 063 | 2,510 | 6 | 100 | 247 | 138 | 152 |
| 110-50 | 16 | 903 001 110 050 | 2,480 | 6 | 74 | 247 | 138 | 126 |
| 110-40 | 16 | 903 001 110 040 | 2,470 | 6 | 74 | 247 | 138 | 126 |
| 110-32 | 16 | 903 001 110 032 | 2,450 | 6 | 74 | 247 | 138 | 126 |
| 110-25 | 16 | 903 001 110 025 | 2,430 | 6 | 74 | 247 | 138 | 126 |
| 110-20 | 16 | 903 001 110 020 | 2,420 | 6 | 74 | 247 | 138 | 126 |
| 125-63 | 16 | 903 001 125 063 | 2,540 | 6 | 100 | 254 | 145 | 152 |
| 125-50 | 16 | 903 001 125 050 | 2,510 | 6 | 74 | 254 | 145 | 126 |
| 125-40 | 16 | 903 001 125 040 | 2,500 | 6 | 74 | 254 | 145 | 126 |
| 125-32 | 16 | 903 001 125 032 | 2,480 | 6 | 74 | 254 | 145 | 126 |
| 125-25 | 16 | 903 001 125 025 | 2,460 | 6 | 74 | 254 | 145 | 126 |
| 125-20 | 16 | 903 001 125 020 | 2,520 | 6 | 74 | 254 | 145 | 126 |
| 140-63 | 16 | 903 001 140 063 | 2,540 | 5 | 100 | 262 | 153 | 152 |
| 140-50 | 16 | 903 001 140 050 | 2,510 | 5 | 74 | 262 | 153 | 126 |
| 140-40 | 16 | 903 001 140 040 | 2,500 | 5 | 74 | 262 | 153 | 126 |
| 140-32 | 16 | 903 001 140 032 | 2,480 | 5 | 74 | 262 | 153 | 126 |
| 140-25 | 16 | 903 001 140 025 | 2,460 | 5 | 74 | 262 | 153 | 126 |
| 140-20 | 16 | 903 001 140 020 | 2,450 | 5 | 74 | 262 | 153 | 126 |
| 160-63 | 16 | 903 001 160 063 | 2,550 | 5 | 100 | 272 | 163 | 152 |
| 160-50 | 16 | 903 001 160 050 | 2,520 | 5 | 74 | 272 | 163 | 126 |
| 160-40 | 16 | 903 001 160 040 | 2,510 | 5 | 74 | 272 | 163 | 126 |
| 160-32 | 16 | 903 001 160 032 | 2,490 | 5 | 74 | 272 | 163 | 126 |
| 160-25 | 16 | 903 001 160 025 | 2,470 | 5 | 74 | 272 | 163 | 126 |
| 160-20 | 16 | 903 001 160 020 | 2,460 | 5 | 74 | 272 | 163 | 126 |

EF Servis Te
EF Service Tee

PE 100 SDR11



| Çap Dia | Basınç PN | Kod Code | Kg /Adet Kg/Pcs | Koli/Adet Box/Pcs | le (mm) | H (mm) | H1 (mm) | Z (mm) |
|---------|-----------|-----------------|-----------------|-------------------|---------|--------|---------|--------|
| 40-32 | 16 | 903 002 040 032 | 0,333 | 20 | 76 | 135 | 38 | 114 |
| 40-25 | 16 | 903 002 040 025 | 0,323 | 20 | 75 | 135 | 38 | 114 |
| 40-20 | 16 | 903 002 040 020 | 0,313 | 20 | 67 | 135 | 38 | 104 |
| 50-32 | 16 | 903 002 050 032 | 0,333 | 20 | 76 | 135 | 43 | 117 |
| 50-25 | 16 | 903 002 050 025 | 0,323 | 20 | 75 | 135 | 43 | 113 |
| 50-20 | 16 | 903 002 050 020 | 0,313 | 20 | 64 | 135 | 43 | 105 |
| 63-63 | 16 | 903 002 063 063 | 0,675 | 18 | 107 | 180 | 51 | 149 |
| 63-50 | 16 | 903 002 063 050 | 0,628 | 20 | 92 | 180 | 51 | 138 |
| 63-40 | 16 | 903 002 063 040 | 0,593 | 20 | 85 | 180 | 51 | 126 |
| 63-32 | 16 | 903 002 063 032 | 0,588 | 20 | 76 | 180 | 51 | 117 |
| 63-25 | 16 | 903 002 063 025 | 0,578 | 20 | 75 | 180 | 51 | 116 |
| 63-20 | 16 | 903 002 063 020 | 0,578 | 20 | 75 | 180 | 51 | 116 |
| 75-63 | 16 | 903 002 075 063 | 0,697 | 15 | 107 | 186 | 56 | 152 |
| 75-50 | 16 | 903 002 075 050 | 0,644 | 15 | 92 | 186 | 56 | 140 |
| 75-40 | 16 | 903 002 075 040 | 0,624 | 15 | 82 | 186 | 56 | 126 |
| 75-32 | 16 | 903 002 075 032 | 0,597 | 15 | 76 | 186 | 56 | 118 |
| 75-25 | 16 | 903 002 075 025 | 0,590 | 15 | 75 | 186 | 56 | 117 |
| 75-20 | 16 | 903 002 075 020 | 0,590 | 15 | 75 | 186 | 56 | 113 |
| 90-63 | 16 | 903 002 090 063 | 0,788 | 12 | 100 | 195 | 65 | 160 |
| 90-50 | 16 | 903 002 090 050 | 0,730 | 12 | 92 | 195 | 65 | 148 |
| 90-40 | 16 | 903 002 090 040 | 0,696 | 12 | 85 | 195 | 65 | 136 |
| 90-32 | 16 | 903 002 090 032 | 0,680 | 12 | 76 | 195 | 65 | 120 |
| 90-25 | 16 | 903 002 090 025 | 0,680 | 12 | 75 | 195 | 65 | 120 |
| 110-63 | 16 | 903 002 110 063 | 0,836 | 10 | 100 | 200 | 75 | 165 |
| 110-50 | 16 | 903 002 110 050 | 0,786 | 10 | 92 | 200 | 75 | 156 |
| 110-40 | 16 | 903 002 110 040 | 0,756 | 10 | 84 | 200 | 75 | 140 |
| 110-32 | 16 | 903 002 110 032 | 0,726 | 10 | 76 | 200 | 75 | 126 |
| 110-25 | 16 | 903 002 110 025 | 0,716 | 10 | 75 | 200 | 75 | 120 |
| 110-20 | 16 | 903 002 110 020 | 0,716 | 10 | 75 | 200 | 75 | 120 |
| 125-63 | 16 | 903 002 125 063 | 0,882 | 8 | 100 | 212 | 82 | 170 |
| 125-50 | 16 | 903 002 125 050 | 0,819 | 8 | 92 | 212 | 82 | 160 |
| 125-40 | 16 | 903 002 125 040 | 0,782 | 8 | 85 | 212 | 82 | 143 |
| 125-32 | 16 | 903 002 125 032 | 0,757 | 8 | 76 | 212 | 82 | 129 |
| 125-25 | 16 | 903 002 125 025 | 0,757 | 8 | 75 | 212 | 82 | 120 |
| 125-20 | 16 | 903 002 125 020 | 0,757 | 8 | 75 | 212 | 82 | 120 |
| 140-63 | 16 | 903 002 140 063 | 0,976 | 6 | 100 | 238 | 95 | 182 |
| 140-50 | 16 | 903 002 140 050 | 0,926 | 6 | 92 | 238 | 95 | 164 |
| 140-40 | 16 | 903 002 140 040 | 0,859 | 6 | 85 | 238 | 95 | 150 |
| 140-32 | 16 | 903 002 140 032 | 0,826 | 6 | 76 | 238 | 95 | 134 |
| 140-25 | 16 | 903 002 140 025 | 0,826 | 6 | 75 | 238 | 95 | 126 |
| 140-20 | 16 | 903 002 140 020 | 0,809 | 6 | 75 | 238 | 95 | 125 |
| 160-63 | 16 | 903 002 160 063 | 0,993 | 6 | 100 | 247 | 105 | 185 |
| 160-50 | 16 | 903 002 160 050 | 0,926 | 6 | 92 | 247 | 105 | 171 |
| 160-40 | 16 | 903 002 160 040 | 0,893 | 6 | 85 | 247 | 105 | 156 |
| 160-32 | 16 | 903 002 160 032 | 0,893 | 6 | 76 | 247 | 105 | 141 |
| 160-25 | 16 | 903 002 160 025 | 0,893 | 6 | 75 | 247 | 105 | 127 |
| 160-20 | 16 | 903 002 160 020 | 0,859 | 6 | 75 | 247 | 105 | 124 |
| 180-63 | 16 | 903 002 180 063 | 1,031 | 5 | 100 | 250 | 115 | 192 |
| 180-50 | 16 | 903 002 180 050 | 0,971 | 5 | 92 | 250 | 115 | 175 |
| 180-40 | 16 | 903 002 180 040 | 0,931 | 5 | 85 | 250 | 115 | 160 |
| 180-32 | 16 | 903 002 180 032 | 0,911 | 5 | 76 | 250 | 115 | 143 |
| 180-25 | 16 | 903 002 180 025 | 0,891 | 5 | 75 | 250 | 115 | 127 |
| 180-20 | 16 | 903 002 180 020 | 0,871 | 5 | 75 | 250 | 115 | 127 |