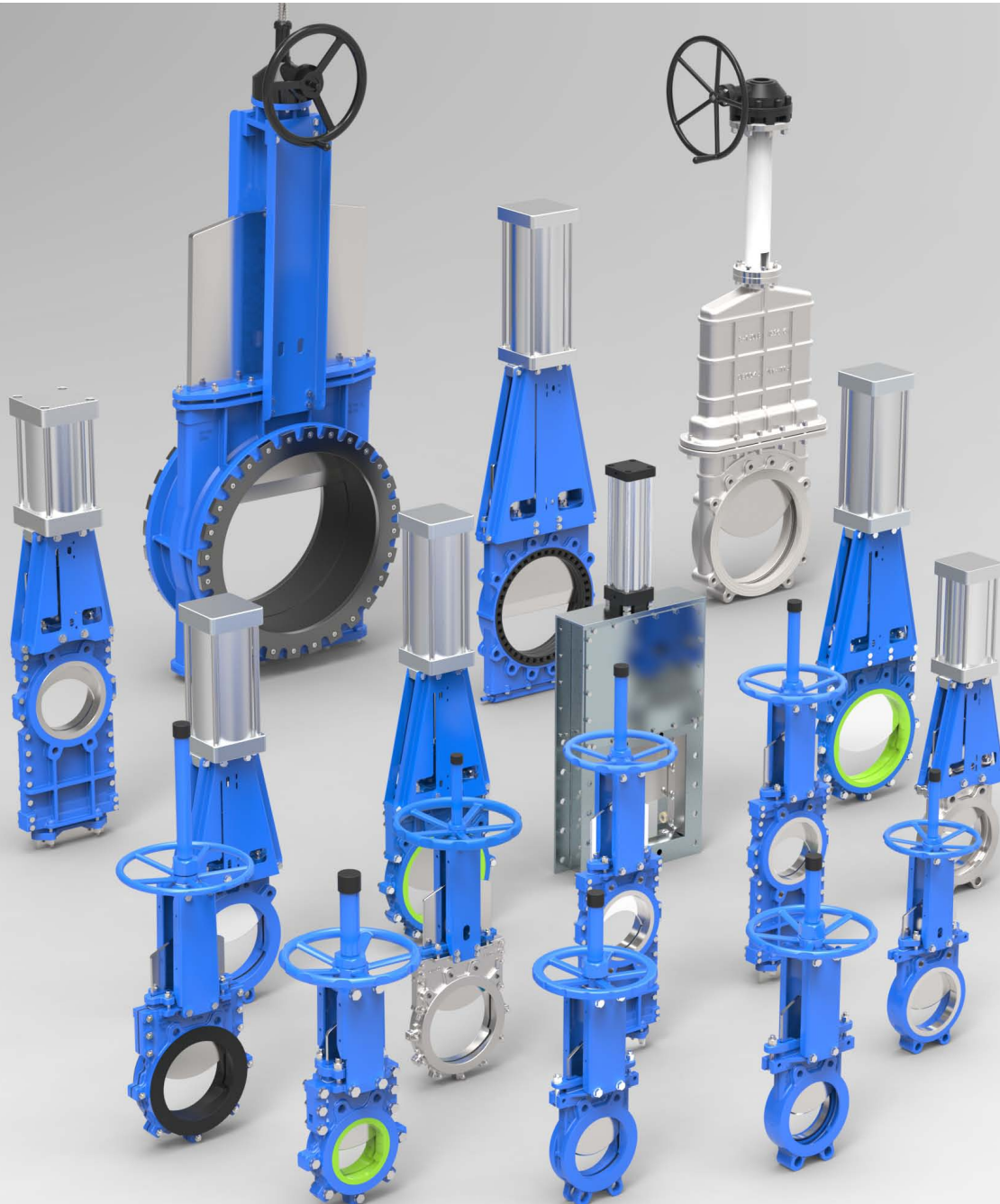
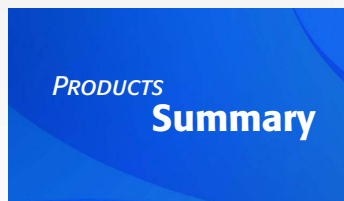


Since 2000



ancvalve

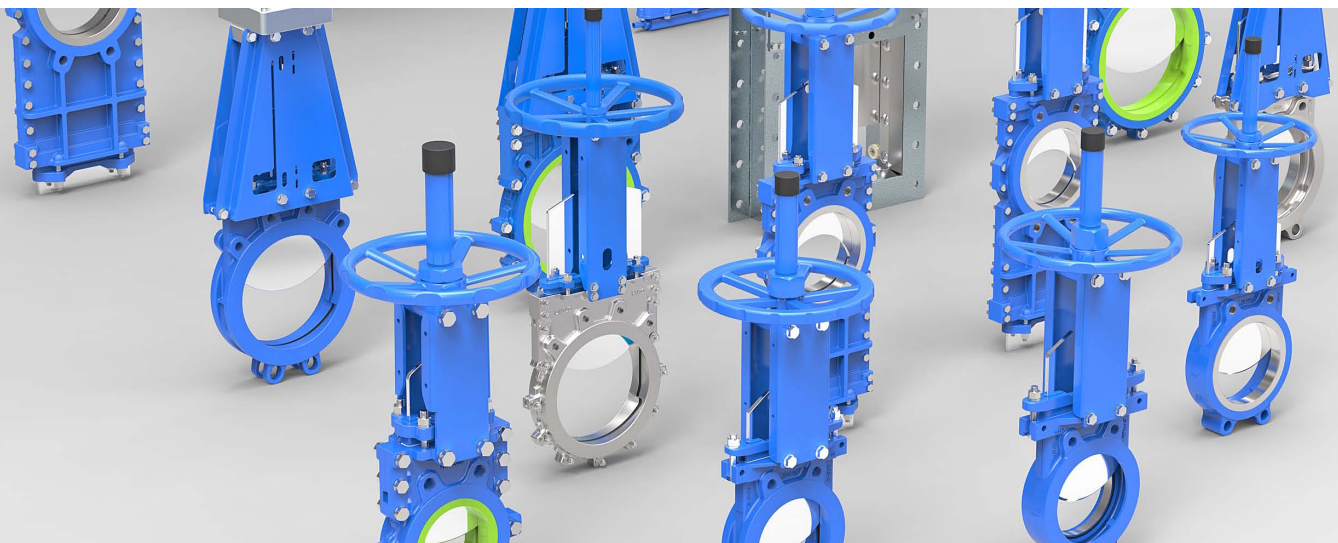
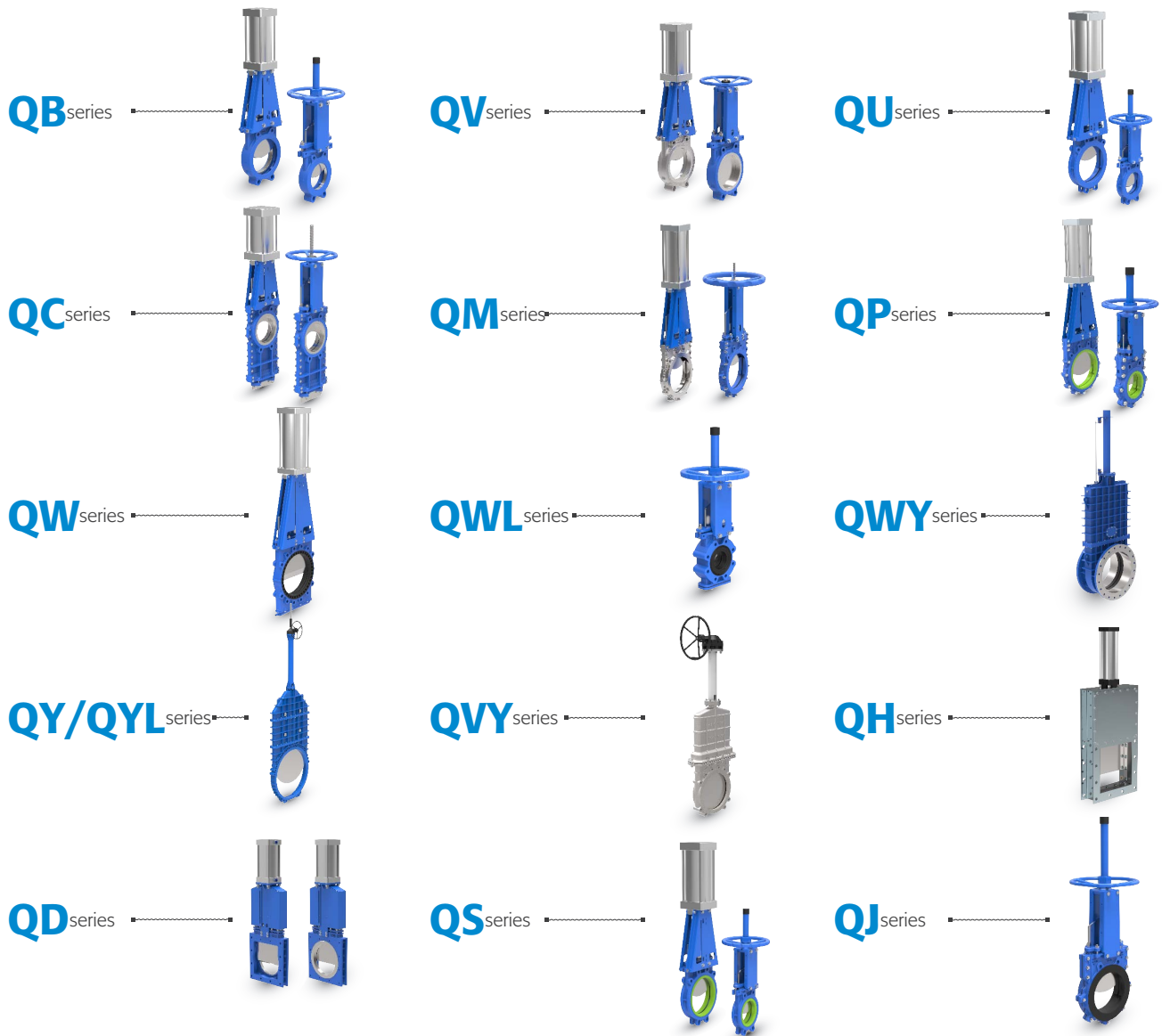
KNIFE GATE VALVE EXPERT



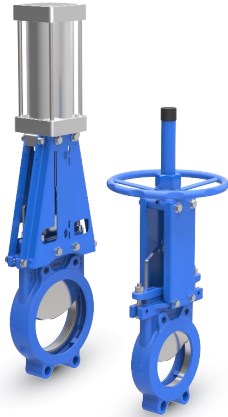
www.ancvalve.co.kr

Products

More than 50 countries cooperation and projects



QB



Unidirectional Sealing
Light Seat replaceable

QB series Unidirectional Seal Knife Gate Valve/Light Seat Replaceable

Model: QBZ73-AX

Working Pressure:	DN50-DN100	16bar	DN600-DN650	5bar
	DN125-DN200	14bar	DN700-DN750	4bar
	DN250-DN300	12Bar	DN800-DN900	3bar
	DN350-DN400	10bar	DN1000	2bar
	DN450-DN550	8bar		

Type: Wafer,Lug,Flange
Design Standard: MSS SP-81
Flange Standard: PN10,PN16,150LB ,JIS 10K,TABLE E/D
Face to Face: MSS SP-81
Testing Standard: API-598
Transmission: manual, electric, pneumatic, hydraulic, sprocket, electro-hydraulic, gear
Main material: F55,F53,2205,SS310,CF3M,CF3,CF8M,CF8,WCB,GGG40
Disc material: F55,F53,2205,SS310,SS316L,SS304
Sealing material: NBR,NR,EPDM,FKM,Metal to Metal
Packing: PTFE,high water based,rubber packing,graphite
Applicable medium: Applicable for general purpose.

QV



Unidirectional Sealing
Heavy Seat replaceable

QV series Unidirectional Seal Knife Gate Valve/Heavy Seat Replaceable

Model: QBZ73-AX

Working Pressure:	DDN50-DN100	16bar	DN600-DN650	5bar
	DN125-DN200	14bar	DN700-DN750	4bar
	DN250-DN300	12Bar	DN800-DN900	3bar
	DN350-DN400	10bar	DN1000	2bar
	DN450-DN550	8bar		

Type: Wafer,Lug
Design Standard: MSS SP-81
Flange Standard: DIN PN10,PN16,150LB ,JIS 10K,TABLE E/D
Face to Face: MSS SP-81
Testing Standard: API-598
Operation: handwheel, electric, pneumatic, hydraulic, sprocket, electro-hydraulic, gear
Main material: WCB,GGG40,CF8,CF8M,F55,F53,2205,SS310,CF3M,CF3
Disc material: F55,F53,2205,SS310,SS316L,SS304
Sealing material: NBR,NR,EPDM,FKM,Metal to Metal
Packing: PTFE,high water based,rubber packing,graphite
Applicable medium: Applicable for sugar, paper, sewage, tailings, slagging, and other general purpose.

QC



Bi-directional Sealing
Disc Through Type

QC series Bi-directional Seal Knife Gate Valve/Disc Through type

Model: QCZ73-AX

Working Pressure:	DN50-DN100	16bar		
	DN125-DN200	14bar		
	DN250-DN300	12Bar		
	DN350-DN400	10bar		

Type: Wafer
Design Standard: MSS SP-81
Flange Standard: DIN PN10,PN16,150LB ,JIS 10K,TABLE E/D
Face to Face: MSS SP-81
Testing Standard: API-598
Operation: handwheel, electric, pneumatic, hydraulic, sprocket, electro-hydraulic, gear
Main material: WCB,CF8M,CF8
Disc material: F55,F53,2205,SS310,SS316L,SS316,SS304
Sealing material: NBR,NR,EPDM,FKM,Metal to Metal
Packing: PTFE,high water based,rubber packing,graphite
Applicable medium: Applicable for paper, asphalt, tailings, slagging, cement, slime, Dust,Solid Particles, deslagging and so on.

QW



Bi-directional Sealing
Self Sealing

QW series Bi-directional Self-sealing Knife Gate Valve

Model:	QWZ73-AX			
Working Pressure:	DN50-DN100	16bar	DN450-DN500	5Bar
	DN125-DN200	10bar	DN600-DN700	3bar
	DN250-DN400	7bar	DN800	2bar
Type:	Wafer			
Design Standard:	MSS SP-81			
Flange Standard:	DIN PN10,PN16,150LB ,JIS 10K,TABLE E/D			
Face to Face:	MSS SP-81			
Testing Standard:	API-598			
Operation:	handwheel, electric, pneumatic, hydraulic, sprocket, electro-hydraulic, gear			
Main material:	GGG40,WCB,CF8,CF8M			
Disc material:	F55,F53,2205,SS310,SS316L,SS316,SS304			
Sealing material:	NR			
Packing:	PTFE,high water based,rubber packing,graphite			
Applicable medium:	Applicable for mud, pulp, tailings, cyclones and so on.			

QWL

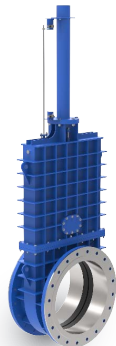


Bi-directional Sealing
Self Sealing Medium Pressure

QWL series Bi-directional Self-sealing Knife Gate Valve/Medium Pressure

Model:	QWLZ43-AX			
Working Pressure:	DN50-DN800	20bar		
	DN900-DN1000	10bar		
Type:	Lug,Flange			
Design Standard:	MSS SP-81			
Flange Standard:	DIN PN10,PN16,150LB ,JIS 10K,TABLE E/D			
Face to Face:	MSS SP-81			
Testing Standard:	API-598			
Operation:	handwheel, electric, pneumatic, hydraulic, sprocket, electro-hydraulic, gear			
Main material:	GGG40			
Disc material:	F55,F53,2205,SS310,SS316L,SS316,SS304			
Sealing material:	NR			
Packing:	PTFE,high water based,rubber packing,graphite			
Applicable medium:	Applicable for Mud, pulp, tailings, cyclones and so on.			

QWY



Bi-directional Sealing
Fully Enclosed Medium
Pressure

QWY series Bi-directional Seal Knife Gate Valve/Fully Enclosed Medium Pressure

Model:	QWYZ43-AX			
Working Pressure:	DN300-DN500	20bar		
	DN550-DN800	16bar		
	DN850-DN1000	10bar		
	DN1100-DN2000	8bar		
Type:	Flange			
Design Standard:	MSS SP-81			
Flange Standard:	DIN PN10,PN16,150LB ,JIS 10K,TABLE E/D			
Face to Face:	MSS SP-81			
Testing Standard:	API-598			
Operation:	handwheel, electric, pneumatic, hydraulic, sprocket, electro-hydraulic, gear			
Main material:	F55,F53,2205,SS310,CF3M,CF3,CF8M,CF8,WCB			
Disc material:	F55,F53,2205,SS310,SS316L,SS316,SS304			
Sealing material:	NBR,NR,EPDM,			
Packing:	PTFE,high water based,rubber packing,graphite			
Applicable medium:	Applicable for sudge boat, cutter suction boat, mud and so on.			

QJ



Bi-directional
Rubber Lining

QJ series 2PC Body Bi-directional Fully Rubber Lining Knife Gate Valve

Model:	QJZ73-AX			
Working Pressure:	DN50-DN200	16bar		
	DN250-DN400	10bar		
Type:	Wafer			
Design Standard:	MSS SP-81			
Flange Standard:	DIN PN10,PN16,150LB ,JIS 10K,TABLE E/D			
Face to Face:	MSS SP-81			
Testing Standard:	API-598			
Operation:	handwheel, electric, pneumatic, hydraulic, sprocket, electro-hydraulic, gear			
Main material:	GGG40			
Disc material:	F55,F53,2205,SS310,SS316L,SS316,SS304			
Sealing material:	NBR,NR,EPDM,FKM			
Packing:	PTFE,high water based,rubber packing,graphite			
Applicable medium:	Applicable for high pressure, sewage treatment, paper, Slurry, Mining, sedimentation tank, mud, tailings and so on.			

QU



Bi-directional Sealing Grooveless

QU series
1PC Body Bi-directional seal Knife Gate Valve Grooveless

Model: QUZ73-AX
Working Pressure:

DN50-DN100	16bar	DN600-DN650	5bar
DN125-DN200	14bar	DN700-DN750	4bar
DN250-DN300	12Bar	DN800-DN900	3bar
DN350-DN400	10bar	DN1000	2bar
DN450-DN550	8bar		

Type: Wafer
Design Standard: MSS SP-81
Flange Standard: DIN PN10,PN16,150LB ,JIS 10K,TABLE E/D
Face to Face: MSS SP-81

Testing Standard: API-598
Operation: handwheel, electric, pneumatic, hydraulic, sprocket, electro-hydraulic, gear
Main material: GGG40

Disc material: SS316L,SS304
Sealing material: NBR,NR,EPDM,FKM
Packing: PTFE,high water based,rubber packing,graphite

Applicable medium: Applicable for sewage treatment, paper, sedimentation tanks, mud and so on.

QS



Bi-directional Sealing Grooveless Wear-resistant

QS series
1PC Body Bi-directional seal Knife Gate Valve Grooveless Wear-Resistant

Model: QSZ73-AX
Working Pressure:

DN50-DN100	10bar
DN125-DN200	8bar
DN250	5bar

Type: Wafer
Design Standard: MSS SP-81
Flange Standard: DIN PN10,PN16,150LB ,JIS 10K,TABLE E/D
Face to Face: MSS SP-81

Testing Standard: API-598
Operation: handwheel, electric, pneumatic, hydraulic, sprocket, electro-hydraulic, gear
Main material: GGG40

Disc material: F55,F53,2205,SS310,SS316L,SS316,SS304
Sealing material: NBR,NR,EPDM,FKM
Seat Cover: Polyurethane

Packing: PTFE,high water based,rubber packing,graphite
Applicable medium: Applicable for sewage treatment, paper, sedimentation tanks, mud and so on.

QM



Bi-directional Sealing 2PC Body Grooveless

QM series
2PC Body Bi-directional seal Knife Gate Valve Grooveless

Model: QMZ73-AX
Working Pressure:

DN50-DN200	16bar
DN250-DN600	10bar
DN650-DN700	8bar
DN750-DN1000	6bar
DN1200-DN2000	4bar

Type: Wafer
Design Standard: MSS SP-81
Flange Standard: DIN PN10,PN16,150LB ,JIS 10K,TABLE E/D
Face to Face: MSS SP-81

Testing Standard: API-598
Operation: handwheel, electric, pneumatic, hydraulic, sprocket, electro-hydraulic, gear
Main material: F55,F53,2205,SS310,CF3M,CF3,CF8M,CF8,WCB,GGG40

Disc material: F55,F53,2205,SS310,SS316L,SS316,SS304
Sealing material: NBR,NR,EPDM,FKM
Packing: PTFE,high water based,rubber packing,graphite

Applicable medium: Applicable for high pressure, pulp, sewage treatment, paper, sedimentation tank, mud, tailings and so on.

QP



Bi-directional Sealing Polyurethane Lining

QP series
2PC Body Bi-directional seal Polyurethane lining Knife Gate Valve

Model: QPZ73-AU
Working Pressure:

DN50-DN200	16bar
DN250-DN600	10bar

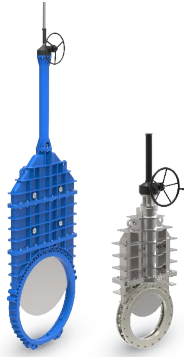
Type: Wafer
Design Standard: MSS SP-81
Flange Standard: DIN PN10,PN16,150LB ,JIS 10K,TABLE E/D
Face to Face: MSS SP-81

Testing Standard: API-598
Operation: handwheel, electric, pneumatic, hydraulic, sprocket, electro-hydraulic, gear
Main material: CF8M,CF8,WCB,GGG40

Disc material: F55,F53,2205,SS310,SS316L,SS316,SS304
Sealing material: Polyurethane
Packing: PTFE,high water based,rubber packing

Applicable medium: Applicable for mineral processing, sewage, tailings, slag, seawater, and other acid and alkali wear, media conditions, such as cyclone.

QY



Unidirectional Sealing

QY series
Unidirectional seal Knife Gate Valve(No-Rising Stem Available)

Model: QYZ73-AX
Working Pressure: DN50-DN100 16bar DN600-DN650 5bar
 DN125-DN200 14bar DN700-DN750 4bar
 DN250-DN300 12Bar DN800-DN900 3bar
 DN350-DN400 10bar DN1000-DN3000 2bar
 DN450-DN550 8bar
Type: Wafer,Lug,Flange
Design Standard: MSS SP-81
Flange Standard: DIN PN10,PN16,150LB ,JIS 10K,TABLE E/D
Face to Face: MSS SP-81
Testing Standard: API-598
Operation: handwheel, electric, pneumatic, hydraulic, sprocket, electro-hydraulic, gear
Main material: F55,F53,2205,SS310,CF3M,CF3,CF8M,CF8,WCB,GGG40
Disc material: F55,F53,2205,SS310,SS316L,SS316,SS304
Sealing material: NBR,NR,EPDM,FKM,Metal to Metal
Packing: PTFE,high water based,rubber packing,graphite
Applicable medium: Applicable for steam, sewage, high pressure pipes,gas,air and so on.

Bi-directional seal available

QVY



Unidirectional Sealing

QVY series
Unidirectional seal Knife Gate Valve

Model: QVYZ73-AX
Working Pressure: DN80-DN2000 25bar
 DN2200-DN3000 16bar
Type: Wafer,Lug,Flange
Design Standard: MSS SP-81
Flange Standard: DIN PN10,PN16,150LB ,JIS 10K,TABLE E/D
Face to Face: MSS SP-81
Testing Standard: API-598
Operation: handwheel, electric, pneumatic, hydraulic, sprocket, electro-hydraulic, gear
Main material: F55,F53,2205,SS310,CF3M,CF3,CF8M,CF8,WCB,GGG40
Disc material: F55,F53,2205,SS310,SS316L,SS316,SS304
Sealing material: NBR,NR,EPDM,FKM,Metal to Metal
Packing: PTFE,high water based,rubber packing,graphite
Applicable medium: Applicable for steam, sewage, high pressure pipes and so on.

QH

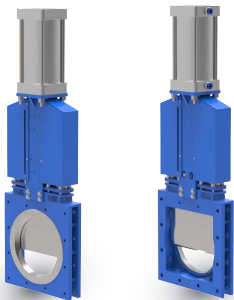


Unidirectional Sealing

QH series
Unidirectional seal Knife Gate Valve

Model: QXZ43-AX
Working Pressure: DN150-DN400 6-10bar
 DN450-DN550 4-7bar
 DN600-DN800 3-5bar
 DN850-DN900 1-2bar
Type: Flange
Design Standard: MSS SP-81
Flange Standard: DIN PN10,PN16,150LB ,JIS 10K,TABLE E/D
Face to Face: MSS SP-81
Testing Standard: API-598
Operation: handwheel, electric, pneumatic, hydraulic, sprocket, electro-hydraulic, gear
Main material: Q235,Stainless Steel
Disc material: F55,F53,2205,SS310,SS316L,SS316,SS304
Sealing material: NBR,NR,EPDM,FKM,Metal to Metal
Packing: PTFE,high water based,rubber packing,graphite
Applicable medium: Dust,Solid Particles,Coal, oil, chemical and so on.

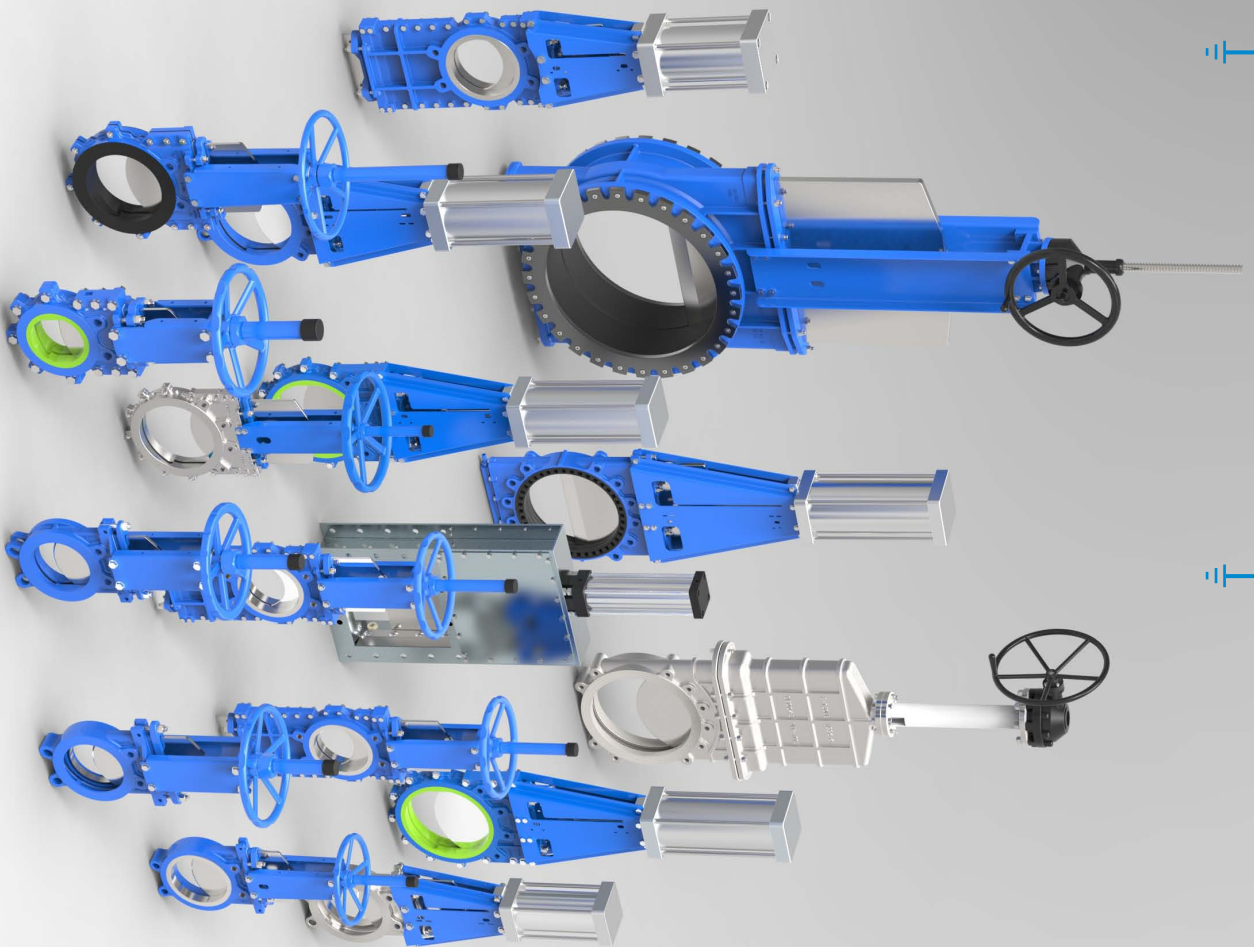
QD



Unidirectional Sealing

QD series
Unidirectional seal Knife Gate Valve

Model: QDZ43-AX
Working Pressure: DN150-DN200 10bar
 DN250-DN400 7bar
 DN450-DN550 5bar
 DN600-DN700 3bar
Type: Flange
Design Standard: MSS SP-81
Flange Standard: DIN PN10,PN16,150LB ,JIS 10K,TABLE E/D
Face to Face: MSS SP-81
Testing Standard: API-598
Operation: handwheel, electric, pneumatic, hydraulic, sprocket, electro-hydraulic, gear
Main material: Q235,Stainless Steel
Disc material: F55,F53,2205,SS310,SS316L,SS316,SS304
Sealing material: NBR,NR,EPDM,FKM,Metal to Metal
Packing: PTFE,high water based,rubber packing,graphite
Applicable medium: Dust,Solid Particles,Coal, oil, chemical and so on.Slag, cinder,dislagging recommend.



anc corporation

ADDRESS : 116-219, Busan T-PLEX, 41, Yutongdanji 1-ro,
Gangseo-gu, Busan, Korea (zip code : 46721)
TEL : +82 51 796 1570
FAX : +82 51 796 1571
WEB: www.ancvalve.co.kr
EMAIL : ancvalve@daum.net / ancvalve@naver.com

A-excellent B- good C-ordinary X-bad

name	natural rubber	Styrene Butadiene	Nitrile Butadiene Rubber	Ethylene-Propylene-Diene Monomer	Silica	Fluororubber	Polyurethane
code	NR	SBR	NBR	EPDM	SI	FKM	PU
min °C	-75	-55	-40	-55	-110	-30	-30
max °C	85	70	100	150	225	250	100
hard(shore A)	30~90	40~90	40~90	40~90	40~80	55~90	50~80
tensile(kgf/cm ²)max	35	25	25	20	15	20	20
mineral oil	X	X	A	X	B	A	A
sulfuric acid	C	C	C	A	X	A	C
toluene	X	X	X	X	X	A	A
alcohol	B	B	A	A	X	A	X
Ether	X	X	C	X	X	X	C